

# WHAT'S ON

LONDON 2015-2016

## LEISURE CONNECT

### 30 MILLION MINUTES

Dawn French, Queen of British comedy, performs her first ever critically acclaimed solo show, based on her life and career. Consisting of various delights and riches, with the odd irksome tribulation thrown in, Dawn takes audiences through the various lessons life has taught her, and the things she knows for sure. Her extraordinary lack of willpower, combined with an enviable knack for nouse parking and showing off, has driven her to grapple with the big stuff of life in public. 30 million minutes of life in fact. That's how long she's been alive. As a big fat liar once said of her: 'Her singular attempt to be ordinary fails miserably.'

**SCHEDULE:** Tuesday – Saturday. Dark Sunday – Monday. **From 11 November to 05 December.**

**VENUE:** Vaudeville Theatre, The Strand, London, WC2R. Nearest Tube: Charing Cross

### PLAY



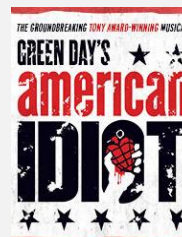
### AMERICAN IDIOT

Green Day's explosive, award-winning Broadway musical American Idiot, blasts into the UK for its West End premiere, starring X factor finalist Amelia Lily. The story of three boyhood friends, each searching for meaning in a post 9-11 world, American Idiot features the music of Green Day. Winner of two Tony Awards® and the 2010 Grammy Award winner for Best Musical Show Album, American Idiot's hit songs include "Boulevard of Broken Dreams," "21 Guns," "Wake Me Up When September Ends," "Holiday," several songs from Green Day's 2009 release "21st Century Breakdown" and an unreleased love song, "When It's Time."

**SCHEDULE:** Tuesday – Sunday. Dark Monday. **Performances through 22 November.**

**VENUE:** Arts Theatre, Great Newport Street, London, WC2H. Nearest Tube: Leicester Square

### MUSICAL



### OUR COUNTRY'S GOOD

With her father the Duke banished and in exile, Rosalind and her cousin Celia leave their lives in the court behind them and journey into the Forest of Arden. There, released from convention, Rosalind experiences the liberating rush of transformation. Disguising herself as a boy, she embraces a different way of living and falls spectacularly in love. Shakespeare's glorious comedy of love and change comes to the National Theatre for the first time in over 30 years. Rosalie Craig plays Rosalind.

**SCHEDULE:** **Performances 26 Oct to 05 March.** In repertory; please enquire or see online calendar.

**VENUE:** Olivier Theatre, National Theatre, South Bank, London, SE1 Nearest Tube: Waterloo

### PLAY



### BEAUTIFUL - THE CAROLE KING MUSICAL

Carole King, the chart-topping music legend, was an ordinary girl with an extraordinary talent. But her greatest challenge was to find her own voice and finally step into the spotlight. BEAUTIFUL is the untold story of her journey from school girl to superstar; from her relationship with husband and song-writing partner Gerry Goffin, their close friendship and playful rivalry with fellow song-writing duo Barry Mann and Cynthia Weil, to her remarkable rise to stardom. Along the way, she became one of the most successful solo acts in popular music history, and wrote the soundtrack to a generation.

**SCHEDULE:** Monday – Saturday. Dark Sunday.

**VENUE:** Aldwych Theatre, Aldwych, London, WC2B. Nearest Tube: Drury Lane

### MUSICAL



### BEND IT LIKE BECKHAM

Jess needs extra time. She's facing the most important decision of her life; live up to family expectations of university, career and marriage, or follow in the footsteps of her hero David Beckham. From the first pass in the park to the final free-kick, this joyous musical comedy with vibrant characters, features a new score with a Punjabi kick. This brand new British musical is a funny, glorious and uplifting adaptation of the much-loved hit film about refusing to watch from the sidelines, bending the rules, and scoring that deciding goal. Co-written and directed by Gurinder Chadha, director of the original film.

**SCHEDULE:** Monday – Saturday. Dark Sunday.

**VENUE:** Phoenix Theatre, Charing Cross Road, London, WC2. Nearest Tube: Leicester Square

### MUSICAL



### BILLY ELLIOT THE MUSICAL

One of the most celebrated, award-winning musicals on stage today, Billy Elliot has been dazzling the West End since 2005. Set in a northern mining town, against the background of the 1984-85 miners' strike, it's the inspirational story of a young boy's struggle against the odds to make his dream come true. Follow Billy as he stumbles out of the boxing ring and into a ballet class where he discovers a passion for dance that inspires his family and whole community and changes his life forever. With unforgettable music by Elton John, sensational dance and a powerful storyline, this theatrical experience will stay with you forever.

**SCHEDULE:** Monday – Saturday. Dark Sunday.

**VENUE:** Victoria Palace Theatre, Victoria Street, London, SW1. Nearest Tube: Victoria

### MUSICAL



# WHAT'S ON

LONDON 2015-2016

# LEISURE CONNECT

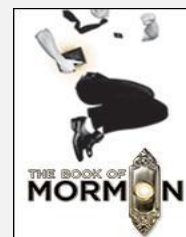
## THE BOOK OF MORMON

### MUSICAL

Nine 2011 Tony Awards say it's the Best Musical of the Year. Vogue says, "It's the funniest musical of all time." And The New York Times says, "It's the best musical of this century." It's 'The Book of Mormon', the Broadway phenomenon from 'South Park' creators Trey Parker and Matt Stone and 'Avenue Q' co-creator Robert Lopez. Time Out New York calls it "Musical comedy heaven. The most exuberantly entertaining Broadway musical." "LET'S REJOICE THAT THE MORMONS ARE FINALLY COMING. I LOVE THIS SHOW." Baz Bamigboye, The Daily Mail

**SCHEDULE:** Monday – Saturday. Dark Sunday.

**VENUE:** Prince of Wales Theatre, Coventry Street, London, W1. Nearest Tube: Piccadilly Circus



## BREAKFAST AT TIFFANY'S

### PLAY

The classic tale of Holly Golightly is being given a new lease of life as a stage play with music in a sparkling, sophisticated production starring the award-winning Pixie Lott as Holly. Adapted by Richard Greenberg, this tale of vivacious, good-time girl Holly Golightly and her fantastical existence in 1940s New York City, is told through the eyes of a young writer, completely fascinated by this exquisite extrovert who every woman wants to be, and every man wants to be with. With memorable songs from the era, this stylish production is set to capture the hearts of audiences and sparkle like a diamond in a Tiffany's window.

**SCHEDULE:** Monday – Saturday. Dark Sunday. **2016 Performances 30 June to 17 September.**

**VENUE:** Theatre Royal Haymarket, Haymarket, London, SW1. Nearest Tube: Piccadilly Circus



## THE CARETAKER

### PLAY

When it premiered in 1960, The Caretaker changed the face of modern theatre. Now Harold Pinter's groundbreaking classic comes to The Old Vic in a new production directed by Matthew Warchus. Disturbed handyman Aston has invited an irascible tramp to stay with him at his brother's jumbled London flat. At first it seems that the manipulative guest will take advantage of his vulnerable host. But when Aston's brother Mick arrives, an enigmatic power struggle emerges between the three men that is in equal parts menacing, touching and darkly comic. Starring one of Britain's best-loved actors, Timothy Spall.

**SCHEDULE:** Monday – Saturday. Dark Sunday. **Performances 26 March to 14 May.**

**VENUE:** Old Vic Theatre, The Cut, London, SE1 Nearest Tube: Waterloo



## CATS

### MUSICAL

Cats is set to return to the London Palladium for a final ten week season from 23 October 2015 – 2 January 2016. The 2015 Olivier award nominated show, which was reworked by the original creative team – Director Trevor Nunn, Associate Director and Choreographer Gillian Lynne, Designer John Napier and Composer Andrew Lloyd Webber – was a smash hit throughout its run. Casting for this strictly limited season will be announced shortly.

**SCHEDULE:** Monday – Saturday. Dark Sunday. **Performances 23 October to 02 January.**

**VENUE:** London Palladium, Argyll Street, London, W1F Nearest Tube: Oxford Circus



## CHARLIE AND THE CHOCOLATE FACTORY

### MUSICAL

When Charlie wins a golden ticket to the weird and wonderful Wonka Chocolate Factory, it's the chance of a lifetime to feast on the sweets he's always dreamed of. But beyond the gates astonishment awaits, as down the sugary corridors, and amongst the incredible edible delights, the five lucky winners discover not everything is as sweet as it seems. Roald Dahl's deliciously dark tale comes to life in an ingenious new musical with direction by Oscar winner Sam Mendes, and a new score by Tony and Grammy winners Marc Shaiman and Scott Wittman (Hairspray, "Smash").

**SCHEDULE:** Monday – Saturday. Dark Sunday.

**VENUE:** Theatre Royal, Drury Lane, Catherine Street, London, WC2. Nearest Tube: Covent Garden



## CLOSE TO YOU: BACHARACH REIMAGINED

### PLAY

Fall in love with Bacharach all over again in a dynamic, uplifting and magical journey through over 30 classic hits including: Alfie, Anyone Who Had A Heart, I Say A Little Prayer, Walk On By, Raindrops Keep Falling On My Head, What's New Pussycat?, and, of course, Close To You. Directed by Oliver Award winner Steven Hoggett, performed by a young group of multi-talented musicians and led by the visionary composer and performer Kyle Riabko, the show features thrillingly fresh yet beautifully faithful re-interpretations of Burt Bacharach's classic songbook. Direct from a triumphant engagement in New York!

**SCHEDULE:** Wednesday – Sunday. Dark Monday – Tuesday. **Performances from 03 October.**

**VENUE:** Criterion Theatre, Piccadilly Circus, London, W1. Nearest Tube: Piccadilly Circus



# WHAT'S ON

LONDON 2015-2016

## LEISURE CONNECT

### THE COMMITMENTS

#### MUSICAL

The Commitments, Roddy Doyle's best-selling novel is now live on stage for the very first time, full of heart, humor, and incredible live music. Jimmy Rabbitte, a young working class music fan, who shapes an unlikely bunch of amateur musicians and friends into an amazing live act, the finest soul band Dublin has ever produced. Featuring over 20 soul classics, including "Mustang Sally," "River Deep, Mountain High," "Try A Little Tenderness," "(I Can't Get No) Satisfaction," "Reach Out I'll Be There" and "I Heard It Through the Grapevine." The show is adapted by Roddy Doyle himself, directed by the acclaimed Jamie Lloyd.

**SCHEDULE:** Tuesday – Sunday. Dark Monday. **Performances through 01 November.**

**VENUE:** Palace Theatre, Shaftesbury Avenue, London, W1. Nearest Tube: Leicester Square



### A CHRISTMAS CAROL

#### PLAY

Academy Award-winning actor Jim Broadbent makes his long-awaited return to the stage as Scrooge in a new version of A Christmas Carol adapted by Patrick Barlow (The 39 Steps) from Charles Dickens' classic story of greed, grief, ghoulish ghosts and eleventh hour redemption. From Scrooge and Tiny Tim to Bob Cratchit and Mrs. Fezziwig, Patrick Barlow's imaginative adaptation of A Christmas Carol will bring some of Dickens' most memorable characters to life at the Noël Coward Theatre this winter. Book now for this festive family treat. Expect the unexpected. But don't miss it! (Suitable for ages 10 and over.)

**SCHEDULE:** Monday – Saturday. Dark Sunday. **Performances 30 November to 30 January.**

**VENUE:** Noël Coward Theatre, St. Martin's Lane, London, WC2N. Nearest Tube: Leicester Square



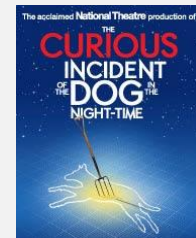
### THE CURIOUS INCIDENT OF THE DOG IN THE NIGHT-TIME

#### PLAY

**Winner - 7 Olivier Awards including Best Play!** Christopher, fifteen years old, stands beside Mrs Shears' dead dog. It has been speared with a garden fork, it is seven minutes after midnight and Christopher is under suspicion. He records each fact in the book he is writing to solve the mystery of who murdered Wellington. He has an extraordinary brain, exceptional at maths while ill-equipped to interpret everyday life. He has never ventured alone beyond the end of his road, but his detective work, takes him on a frightening journey that upturns his world. The National Theatre's production based on Mark Haddon's acclaimed novel.

**SCHEDULE:** Monday – Saturday. Dark Sunday.

**VENUE:** Gielgud Theatre, Shaftesbury Rd., London, W1D. Nearest Tube: Piccadilly Circus



### DERREN BROWN: MIRACLE

#### MUSICAL

The multi-award winning acknowledged master of psychological illusion is back on tour in 2015 with a brand new one-man show, Derren Brown: Miracle. Having confessed that performing live on stage gives him the greatest pleasure, Derren is, once again, looking forward to the challenge that comes with being acknowledged as one of the world's most renowned live performers; a dark manipulator of magic and mind control. This will be Derren's seventh show since 2003. Since then he has toured every year and been watched by an estimated audience of over one and a half million people. For audiences at least 12 years old.

**SCHEDULE:** Tuesday – Sunday. Dark Monday. **Performances 11 November to 16 January.**

**VENUE:** Palace Theatre, Shaftesbury Avenue, London, W1. Nearest Tube: Leicester Square



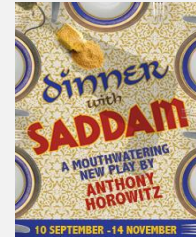
### DINNER WITH SADDAM

#### PLAY

So what happens when Saddam Hussein turns up on your doorstep and announces he is staying for dinner? Political and personal issues are top of the menu, but behind the kitchen door something else far more sinister is cooking. This is the world premiere of Anthony Horowitz's new comedy. Anthony is a hugely successful and prolific writer of over 40 books including the best-selling Alex Rider series, the recent Sherlock Holmes novels, The House of Silk and Moriarty and the forthcoming James Bond novel Trigger Mortis. For TV he has written for Midsomer Murders and also created Foyle's War.

**SCHEDULE:** Tuesday – Sunday. Dark Monday. **Performances through 14 November.**

**VENUE:** Menier Chocolate Factory, Southwark Street, London, SE1. Nearest Tube: London Bridge



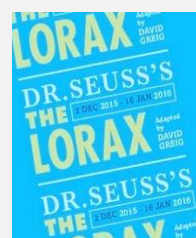
### DR. SEUSS' THE LORAX

#### PLAY

Inspired by Dr. Seuss's classic tale, The Lorax tells of a moustachioed and cantankerous critter who's on a mission to protect the earth from the greedy, tree-chopping, Thneed-knitting businessman known only as The Once-ler. Adapted by David Greig and brought to the stage by acclaimed director Max Webster (James And The Giant Peach, To Kill A Mockingbird, Twelfth Night), The Lorax blends theatrical invention, songs and zany humour in a timely and vibrant Christmas show with a message that will speak to audiences of all ages.

**SCHEDULE:** Monday – Saturday. Dark Sunday. **Performances 02 December to 16 January.**

**VENUE:** Old Vic Theatre, The Cut, London, SE1 Nearest Tube: Waterloo





### ELF THE MUSICAL

Based on the beloved 2003 New Line Cinema hit starring Will Ferrell, ELF is the hilarious tale of Buddy, a young orphan child who mistakenly crawls into Santa's bag of gifts and is transported back to the North Pole. Unaware that he is actually human, Buddy's enormous size and poor toy-making abilities cause him to face the truth. With Santa's permission, Buddy embarks on a journey to New York City to find his birth father, discover his true identity, and help New York remember the true meaning of Christmas.

Starring the winner of ITV's Superstar Ben Forster as Buddy the Elf and Girls Aloud's Kimberley Walsh as Lovie, the production will

**SCHEDULE:** Monday – Saturday. Dark Sunday. **Performances 26 October to 02 January.**

**VENUE:** Dominion Theatre, Tottenham Court Rd, London, W1p Nearest Tube: Tottenham Court Rd

### MUSICAL



### THE ENTERTAINER

The first season of the Kenneth Branagh Theatre Company promises a year of unmissable theatre. Working in collaboration with artistic associates, director Rob Ashford and designer Christopher Oram, the acclaimed actor-director Kenneth Branagh presents an exceptional series of five plays that bring together a remarkable group of actors. Set against the backdrop of post-war Britain, John Osborne's modern classic conjures the seedy glamour of the old music halls for an explosive examination of public masks and private torment. Rob Ashford directs Kenneth Branagh as the unforgettable Archie Rice.

**SCHEDULE:** Monday – Saturday. Dark Sunday. **2016 Performances 20 August to 12 November.**

**VENUE:** Garrick Theatre, Charing Cross Rd., London, WC2. Nearest Tube: Leicester Square

### PLAY



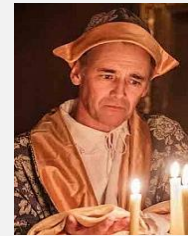
### FARINELLI AND THE KING

Mark Rylance, one of the greatest stage actors in the world, stars in Claire van Kampen's moving and mesmerising new play. Depressed and plagued by insomnia, King Philippe V of Spain lies awake in his chamber. The Queen, desperate to find a cure, hears of Farinelli – a castrato with a voice so divine it has the power to captivate all who hear it. Even Philippe is astonished when Farinelli sings, and begs him to stay. But will Farinelli, one of the greatest celebrities of his time, choose a life of solitude over fame and fortune in the opera-houses of Europe? And will his extraordinary talent prove to be a curse rather than a blessing?

**SCHEDULE:** Monday – Saturday. Dark Sunday. **Performances through 05 December.**

**VENUE:** Duke of York's Theatre, St. Martin's Lane, London, WC2N. Nearest Tube: Piccadilly Circus

### PLAY



### THE FATHER

Now eighty years old, Andre was once a tap dancer. He lives with his daughter Anne and her husband Antoine. Or was he an engineer whose daughter Anne lives in London with her new lover, Pierre? The thing is, he is still wearing his pyjamas and he can't find his watch. He is starting to wonder if he's losing control... The Father is the winner of France's highest theatrical honour, the 2014 Moliere Award for Best Play, and Christopher Hampton's crisp and witty translation has dazzled audiences and critics alike. Tony and Olivier nominees Kenneth Cranham and Claire Skinner reprise their indelible performances eight weeks only.

**SCHEDULE:** Monday – Saturday. Dark Sunday. **Performances through 21 November.**

**VENUE:** Wyndham's Theatre, Charing Cross Road, London, WC2H. Nearest Tube: Leicester Square

### PLAY



### FUTURE CONDITIONAL

A bracingly topical and boisterously funny new play directed by Matthew Warchus, starring Rob Brydon and cast of 23 young performers, it tackles the conundrum of British schooling through a myriad of characters including parents, teachers, and Alia, a prodigiously clever young Afghan refugee and the newest member of Britain's Education Research Board. Alia has a radical solution for Britain's schools that could restore our place in the world education league. But is the system ready to take lessons from a schoolgirl...? Future Conditional proves that when it comes to education, we've all got a lot to learn.

**SCHEDULE:** Monday – Saturday. Dark Sunday. **Performances through 03 October.**

**VENUE:** Old Vic Theatre, The Cut, London, SE1 Nearest Tube: Waterloo

### PLAY



### GUYS AND DOLLS

Don't miss the 'scintillating revival' (Financial Times) of this highly acclaimed Chichester Festival Theatre production as it heads to the West End for a strictly limited run. The sizzling New York tale of gamblers, gangsters and nightclub singers will leave you 'exhilarated' (The Guardian) with a glorious evening featuring some of Broadway's greatest show-stopping tunes, including Luck be a Lady, Sit Down You're Rockin' the Boat and My Time of Day. Along with dazzling choreography by world-renowned Carlos Acosta and Andrew Wright, direction from the Gordon Greenberg, this is one feel-good show you won't want to miss.

**SCHEDULE:** Monday – Saturday. Dark Sunday. **Performances 10 December to 12 March.**

**VENUE:** Savoy Theatre, The Strand, London, WC2. Nearest Tube: Charing Cross

### MUSICAL



# WHAT'S ON

LONDON 2015-2016

# LEISURE CONNECT

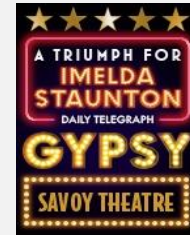
## GYPSY

## MUSICAL

Imelda Staunton delivers a knock-out performance as Momma Rose this dazzling revival of this gloriously entertaining musical fable. Based on the true life memoirs of legendary burlesque entertainer, Gypsy Rose Lee, it tells the tale of Momma Rose and her two daughters, Baby June and Louise, trekking across America in their family vaudeville act. But times are changing, audiences are expecting more, and the two girls have their own ambitions in mind. The rise of burlesque is upon them, and nothing will ever be the same again for Momma Rose. This scintillating production is the first to be seen in London for 40 years.

**SCHEDULE:** Monday – Saturday. Dark Sunday. **Performances through 28 November.**

**VENUE:** Savoy Theatre, The Strand, London, WC2. Nearest Tube: Charing Cross



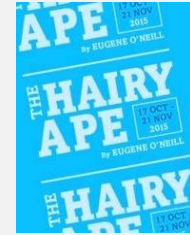
## THE HAIRY APE

## PLAY

A classic expressionist masterpiece by Eugene O'Neill, it tells the story of Yank, a labourer who revels in his status as the strongest stoker on a transatlantic ocean liner. But when Yank is called a 'filthy beast' by the overbred daughter of a steel merchant, he experiences an awakening of consciousness that leads him on a journey through the wealthy neighbourhoods and disenfranchised underbelly of New York society. Searching for a way to belong, Yank is forced to confront primal questions about his true place in the world. An iconic piece of American drama brought to stage by Richard Jones, a visionary of British theatre.

**SCHEDULE:** Monday – Saturday. Dark Sunday. **Performances 17 October to 21 November.**

**VENUE:** Old Vic Theatre, The Cut, London, SE1 Nearest Tube: Waterloo



## HARLEQUINADE / ALL ON HER OWN (Double Bill)

## PLAY

The first season of the Kenneth Branagh Theatre Company begins with a unique Terence Rattigan double bill, as Zoë Wanamaker appears alongside Kenneth Branagh in the rarely seen comic gem HARLEQUINADE, which follows a classical theatre company whose intrigues and dalliances are surprisingly revealed with increasingly calamitous consequences in an affectionate celebration of the lunatic art of putting on a play. Rattigan's one-woman play, ALL ON HER OWN tells the story of Rosemary (Wanamaker) who, alone at midnight in London, has a secret burden to share that is at times both heart-breaking and sinister.

**SCHEDULE:** In repertory; please enquire or see online calendar. **Performances 24 Oct to 13 Jan.**

**VENUE:** Garrick Theatre, Charing Cross Rd., London, WC2. Nearest Tube: Leicester Square



## THE ILLUSIONISTS

## EVENT

THE ILLUSIONISTS - WITNESS THE IMPOSSIBLE - the world's best-selling touring magic show - comes to London's West End for the first time, starring the UK's hottest magician Jamie Raven. Fresh from Britain's Got Talent, where he captivated the British public with his unique magic tricks, Jamie Raven joins this ground breaking spectacular showcasing the dazzling talents of seven of the most incredible illusionists on earth. This fast-paced and wildly entertaining show features seven of the world's greatest magicians. Full of hilarious magic tricks and death-defying stunts, THE ILLUSIONISTS mesmerises audiences of all ages.

**SCHEDULE:** Wednesday – Sunday. Dark Tuesday. **Performances 14 November to 03 January.**

**VENUE:** Shaftesbury Theatre, Shaftesbury Ave, London, WC2. Nearest Tube: Tottenham Court Rd



## THE IMPORTANCE OF BEING EARNEST

## PLAY

David Suchet stars as Lady Bracknell in Oscar Wilde's much loved masterpiece The Importance of Being Earnest! Wilde's superb satire on Victorian manners is one of the funniest plays in the English language - the delightful repartee and hilarious piercing of hypocrisy and pomposity can still make you laugh out loud. The production will be directed by Adrian Noble and feature designs by Peter McKintosh, lighting design by Howard Harrison, music by Larry Blank and sound design by Gareth Owen.

**SCHEDULE:** Monday – Saturday. Dark Sunday. **Performances through 04 November.**

**VENUE:** Vaudeville Theatre, The Strand, London, WC2R. Nearest Tube: Charing Cross



## IN THE HEIGHTS

## MUSICAL

Welcome to Washington Heights, where life's a struggle but the streets are jumping to the irresistible rhythms of love, passion, hopes and dreams. This smash-hit, Tony Award-winning musical is a joyously uplifting tale of young love in a community on the brink of change, set in one bustling neighbourhood where everyone knows everybody, and the breeze carries the sweet sounds of three generations of music. This thrilling evening of unforgettable songs and amazing choreography infused with the scorching rhythms and vibrant energy of a Manhattan heatwave, will enthrall and delight audiences of all ages.

**SCHEDULE:** Monday – Saturday. Dark Sunday. **Performances 03 October to 01 November.**

**VENUE:** King's Cross Theatre, Goods Way, London, N1C Nearest Tube: King's Cross



# WHAT'S ON

LONDON 2015-2016

## LEISURE CONNECT

### JANE EYRE

#### PLAY

Almost 170 years on, Charlotte Brontë's story of the trailblazing Jane is as inspiring as ever. This bold and dynamic production uncovers one woman's fight for freedom and fulfilment on her own terms. From her beginnings as a destitute orphan, Jane Eyre's spirited heroine faces life's obstacles head-on, surviving poverty, injustice and the discovery of bitter betrayal before taking the ultimate decision to follow her heart. This acclaimed re-imagining of Brontë's masterpiece was first staged by Bristol Old Vic last year. Director Sally Cookson now brings her celebrated production to the National as a single exhilarating performance.

**SCHEDULE:** Performances through 10 Jan. In repertory; please enquire or see online calendar.

**VENUE:** Lyttelton Theatre, National Theatre, South Bank, London, SE1. Nearest Tube: Waterloo



### JERSEY BOYS

#### MUSICAL

1962, New Jersey, New York, when music meant rock n roll, violence meant the mob and the only way out was up. Meet four New Jersey boys from the wrong side of the tracks who, with nothing to lose and everything to gain, went on to become rock 'n' roll legends selling 100 million records worldwide. With spectacular performances of all their hits, Jersey Boys is the electrifying true life story of Frankie Valli and the Four Seasons; the Mob, the heartaches, the triumph and the music. Featuring the hits Sherry, Can't Take My Eyes Off You, Big Girls Don't Cry, Oh What A Night, Beggin', Let's Hang On and many more.

**SCHEDULE:** Tuesday – Sunday. Dark Monday.

**VENUE:** Piccadilly Theatre, Denman Street, London, W1. Nearest Tube: Piccadilly Circus



### KINKY BOOTS

#### MUSICAL

Broadway's Best Musical Tony® winning, huge-hearted, high-heeled hit is coming to London! With songs by Grammy® and Tony® winning pop icon Cyndi Lauper, this joyous musical celebration is about the friendships we discover, the families we make and the belief that you can change the world when you change your mind. Inspired by true events, Kinky Boots takes you on an intriguing journey from a gentlemen's shoe factory in Northampton to the glamorous catwalks of Milan. Feel the elation, cheer the story, love the characters and learn that sometimes the best way to fit in is to stand out...

**SCHEDULE:** Monday – Saturday. Dark Sunday.

**VENUE:** Adelphi Theatre, Strand, London, WC2R. Nearest Tube: Covent Garden



### LES MISÉRABLES

#### MUSICAL

Cameron Mackintosh's legendary production of *Les Misérables* is indisputably the world's most popular musical. This international award-winning show sweeps its audience through an epic tale of passion and power set against the backdrop of a nation in the grip of revolution. A spectacular adaptation of Victor Hugo's masterpiece novel, *Les Misérables* continues to thrill audiences night after night.

**SCHEDULE:** Monday – Saturday. Dark Sunday.

**VENUE:** Queen's Theatre, Shaftesbury Avenue, London W1. Nearest Tube: Piccadilly Circus



### LET IT BE

#### EVENT

Relive The Beatles meteoric rise from their humble beginnings in Liverpool's Cavern Club, through the heights of Beatlemania, to their later studio masterpieces, with live performances of early tracks including Twist and Shout, She Loves You and Drive My Car, as well as global mega-hits Yesterday, Hey Jude, Come Together and, of course, Let It Be. Travel back to the magical sixties when all you needed was love, and a little help from your friends!

**SCHEDULE:** Wednesday – Monday. Dark Tuesday. **Performances through 27 September.**

**VENUE:** Garrick Theatre, Charing Cross Rd., London, WC2. Nearest Tube: Leicester Square



### THE LION KING

#### MUSICAL

Set against the majesty of the Serengeti Plains and to the evocative rhythms of Africa, Disney's multi-award winning musical *The Lion King* will redefine your expectations of theatre. A spectacular visual feast, this adaptation of Disney's much-loved film transports audiences to a dazzling world that explodes with glorious colours, stunning effects and enchanting music. At its heart, *The Lion King* is the powerful and moving story of Simba - the epic adventure of his journey from wide-eyed cub to his destined role as King of the Pridelands.

**SCHEDULE:** Tuesday – Sunday. Dark Monday.

**VENUE:** Lyceum Theatre, Wellington Street, London, WC2. Nearest Tube: Covent Garden





# WHAT'S ON

LONDON 2015-2016

## LEISURE CONNECT

### LORD OF THE DANCE: DANGEROUS GAMES

#### EVENT

Dangerous Games showcases exciting and ground-breaking new technology, world champion acrobats and the greatest team of Irish Dancers the world has seen. The cast will be led by James Keegan and Morgan Comer, who have both won every major title in competitive Irish Dance. They were hand-picked and trained by Flatley himself and have starred in the West End and UK touring shows of Lord of the Dance: Dangerous Games. Michael Flatley, who has recently retired from UK performances and will not appear in this engagement, is excited to hand over the reins to such talented performers.

**SCHEDULE:** Tuesday – Sunday. Dark Monday. **Performances 10 October to 02 January.**

**VENUE:** Playhouse Theatre, Northumberland Avenue, London, WC2. Nearest Tube: Embankment



### MAMMA MIA!

#### MUSICAL

Night after night, audiences are having the time of their lives at *Mamma Mia!*. Catherine Johnson's sunny, funny story of love, laughter and friendship has been thrilling London audiences for over 10 years. More recently it became a hit movie when the three women who created the worldwide stage smash adapted it for the silver screen. Inspired by the storytelling magic of ABBA's songs, from "Dancing Queen" and "Take A Chance On Me" to "Super Trouper" and "Thank You For The Music".

**SCHEDULE:** Monday – Saturday. Dark Sunday.

**VENUE:** Novello Theatre, Aldwych, London, WC2. Nearest Tube: Covent Garden



### MATILDA THE MUSICAL

#### MUSICAL

Winner of a record-setting 7 2012 Olivier Awards! The Royal Shakespeare Company's sensational production of Roald Dahl's much-loved story bursts onto the West End stage in this brand new musical version by Dennis Kelly and award-winning musician and comedian Tim Minchin. Children and adults alike will be thrilled and delighted by the story of the special little girl with an extraordinary imagination. Directed by Matthew Warchus with choreography by Peter Darling (Billy Elliot the Musical). The Evening Standard hails this production as "a triumph. Enchanting, bold and ingenious."

**SCHEDULE:** Tuesday – Sunday. Dark Monday.

**VENUE:** Cambridge Theatre, Earlham Street London, WC2H. Nearest Tube: Covent Garden



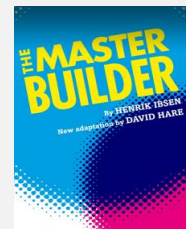
### THE MASTER BUILDER

#### PLAY

A searing and mesmeric exploration of power, control, death and life, Henrik Ibsen's late masterpiece *The Master Builder* comes to The Old Vic in a lively new adaptation by David Hare (multi-award-winning writer and author of 32 plays for the stage including *Skylight*, *The Absence Of War*, *Amy's View*, *Pravda* and *Stuff Happens*). Halvard Solness, a master architect, has spent his lifetime building the tallest spires in the land. But when Hilde, a radiant country girl, descends unexpectedly into his world, age is confronted by youth, and a series of revelations builds to a vertiginous climax. Starring Ralph Fiennes.

**SCHEDULE:** Monday – Saturday. Dark Sunday. **Performances 23 January to 01 March.**

**VENUE:** Old Vic Theatre, The Cut, London, SE1 Nearest Tube: Waterloo



### MEASURE FOR MEASURE

#### PLAY

Vincenzio, Duke of Vienna, disgusted by the immorality in his city, announces his withdrawal from public life and leaves his deputy, the puritanical Angelo, in charge. Angelo, in his zeal for observing the letter of the law, begins a ruthless programme to stamp out sexual licence, in the course of which he condemns one Claudio to death. Surely Claudio's virginal sister Isabella, a novice nun seeking mercy for her brother, could not awake the lust of this cold, censorious man? Injustice, hypocrisy and the challenge of inflexible virtue combine in Shakespeare's most searching exploration of sexual politics and social justice.

**SCHEDULE:** **Performances through 17 October.** In repertory; please enquire or see online calendar.

**VENUE:** Shakespeare's Globe, New Globe Walk, London SE1 Nearest Tube: Blackfriars



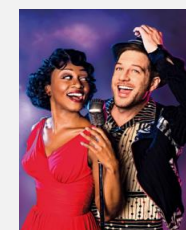
### MEMPHIS

#### MUSICAL

Winner of four Tony Awards including Best Musical, *Memphis* centres on a black singer (Beverly Knight) whose career is on the rise, but who can't break out of segregated clubs of 1950's Memphis. Then she meets a white radio DJ whose love of music transcends race lines and airwaves. When the two collaborate, her soulful music reaches radio audiences everywhere, and the Golden Era of early rock 'n' roll takes flight. But as things start to heat up, whether the world is really ready for their music - or their love - is put to the test. *Memphis* features a Tony-winning story and rock by Joe DiPietro and Bon Jovi's David Bryan.

**SCHEDULE:** Monday – Saturday. Dark Sunday.

**VENUE:** Shaftesbury Theatre, Shaftesbury Ave., London, WC2. Nearest Tube: Tottenham Court Rd.



# WHAT'S ON

LONDON 2015-2016

## LEISURE CONNECT

### MISS SAIGON

#### MUSICAL

The legendary musical from the creators of Les Misérables! Cameron Mackintosh's acclaimed new production has made its highly anticipated return to the West End, and is breaking box office records. Since Miss Saigon's sensational record-breaking run at London's Theatre Royal Drury Lane 25 years ago it has played in 300 cities in 15 different languages, winning awards around the world. This epic musical love story tells the tragic tale of young bar girl Kim, orphaned by war, who falls in love with an American GI called Chris – but their lives are torn apart by the fall of Saigon.

**SCHEDULE:** Monday – Saturday. Dark Sunday. **Performances through 27 February 2016.**

**VENUE:** Prince Edward Theatre, Old Compton Street, London, W1. Nearest Tube: Leicester Square



### MOTOWN THE MUSICAL

#### MUSICAL

This hit musical, direct from Broadway, follows the legendary career of Berry Gordy and the creation of his musical empire, Motown Records. Discover the story behind the beat that changed minds, touched lives and took the world by storm. MOTOWN THE MUSICAL shows how one label and its roster of legendary artists created the soundtrack that transformed America and gave the world a new musical vocabulary - the Motown Sound. With over 40 classic songs such as "My Girl," "What's Going On," "Dancing in the Street," "I Heard It Through The Grapevine" and "Ain't No Mountain High Enough."

**SCHEDULE:** Monday – Saturday. Dark Sunday. **Performances from 11 February 2016.**

**VENUE:** Shaftesbury Theatre, Shaftesbury Ave., London, WC2. Nearest Tube: Tottenham Court Rd.



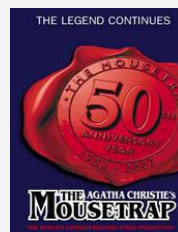
### THE MOUSETRAP

#### PLAY

Agatha Christie's classic is now in its 60th year of keeping audiences guessing! This world record-breaking production continues to enthral, to entertain and to thrill audiences still flocking to St Martin's Theatre from every corner of the globe. In her own inimitable style, Dame Agatha Christie has created an atmosphere of shuddering suspense and a brilliantly intricate plot where murder lurks around every corner. Be part of history. Get tickets to *The Mousetrap*.

**SCHEDULE:** Monday – Saturday. Dark Sunday.

**VENUE:** St Martin's Theatre, West Street, London, WC2. Nearest Tube: Leicester Square



### MCQUEEN

#### PLAY

A mysterious girl has been hiding in a tree in Alexander McQueen's Mayfair garden, secretly watching fashion's greatest contemporary artist as he struggles to find inspiration for his new collection. Tonight she climbs down and breaks into his house to steal a dress she could never afford to buy, in the hope of becoming someone special. Together, they go out onto the streets of London and into the whirlwind of McQueen's life. As the girl begins to unravel before him, it becomes clear that she needs more than her dream dress to see her through the night. A beautiful and haunting voyage into a visionary imagination.

**SCHEDULE:** Monday – Saturday. Dark Sunday. **Performances through 07 November.**

**VENUE:** Theatre Royal Haymarket, Haymarket, London, SW1. Nearest Tube: Piccadilly Circus



### NELL GWYNN

#### PLAY

It is 1660. The Puritans have run away with their drab grey tails between their legs. Charles II has exploded onto the scene with a love of all things loud, French and sexy. And at Drury Lane, a young Nell Gwynn is getting her satsumas out for the punters. Nell Gwynn charts the rise of an unlikely heroine, from her roots in Coal Yard Alley to her success as Britain's most celebrated actress, and her hard-won place in the heart of the king. But at a time when women are second-class citizens, can her charm and spirit protect her from the dangers of the court? Jessica Swale returns with this vibrant take on 17th century life in the theatre.

**SCHEDULE:** **Performances through 17 October.** In repertory; please enquire or see online calendar.

**VENUE:** Shakespeare's Globe, New Globe Walk, London SE1. Nearest Tube: Blackfriars



### THE ORESTEIA

#### PLAY

Before setting out for the Trojan War, King Agamemnon sacrificed his daughter Iphigenia. Many years later, when Agamemnon returns to his palace, his adulterous Queen Clytemnestra takes her revenge by brutally murdering him and installing her lover on the throne. How will the gods judge Orestes, their estranged son, who must avenge his father's death by murdering his mother? The curse of the House of Atreus, passing from generation to generation, is one of the great myths of Western literature. In the hands of Aeschylus, the story enacts the final victory of reason and justice over superstition and barbarity.

**SCHEDULE:** **Performances through 16 October.** In repertory; please enquire or see online calendar.

**VENUE:** Shakespeare's Globe, New Globe Walk, London SE1. Nearest Tube: Blackfriars





# WHAT'S ON

LONDON 2015-2016

## LEISURE CONNECT

### OUR COUNTRY'S GOOD

Observed by a lone, mystified Aboriginal Australian, the first convict ship arrives in Botany Bay, 1788, crammed with England's outcasts. Colony discipline in this vast and alien land is brutal. Three proposed public hangings incite an argument: how best to keep the criminals in line, the noose or a more civilised form of entertainment? The ambitious Second Lieutenant steps forward with a play. But as the mostly illiterate cast rehearses, and a sense of common purpose begins to take hold, the young officer's own transformation is as marked and poignant as that of his prisoners. A profound piece by Timberlake Wertenbaker.

**SCHEDULE:** Performances through 17 October. In repertory; please enquire or see online calendar.

**VENUE:** Olivier Theatre, National Theatre, South Bank, London, SE1 Nearest Tube: Waterloo

#### PLAY



### THE PAINKILLER

The first season of the Kenneth Branagh Theatre Company promises a year of unmissable theatre. Working in collaboration with artistic associates, director Rob Ashford and designer Christopher Oram, the acclaimed actor-director Kenneth Branagh presents an exceptional series of five plays that bring together a remarkable group of actors. Two men. Two lonely hotel rooms. An adjoining door. One of them is a killer. One of them wants to die. What could possibly go wrong? Sean Foley directs his darkly hilarious adaptation of Francis Veber's classic French farce, starring Kenneth Branagh and Rob Brydon.

**SCHEDULE:** Monday – Saturday. Dark Sunday. **2016 Performances 05 March to 30 April.**

**VENUE:** Garrick Theatre, Charing Cross Rd., London, WC2. Nearest Tube: Leicester Square

#### PLAY



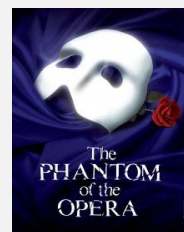
### THE PHANTOM OF THE OPERA

Far beneath the majesty and splendour of the Paris Opera House, hides the Phantom in a shadowy existence. Shamed by his physical appearance and feared by all, the love he holds for his beautiful protégée Christine Daaé is so strong that even her heart cannot resist. Now in its 28th record-breaking year, THE PHANTOM OF THE OPERA continues to captivate audiences in London's West End, after more than 11,000 performances. Andrew Lloyd Webber's mesmerising score along with jaw-dropping scenery and breathtaking special effects, magically combine to bring this tragic love story to life each night.

**SCHEDULE:** Monday – Saturday. Dark Sunday.

**VENUE:** Her Majesty's Theatre, Haymarket, London, SW1Y. Nearest Tube: Piccadilly Circus

#### MUSICAL



### THE PLAY THAT GOES WRONG

Described as Fawlty Towers meets Noises Off, this is THE smash hit new comedy for 2014! The Cornley Polytechnic Drama Society are putting on a 1920s murder mystery, but as the title suggests, everything that can go wrong... does! The accident-prone thespians battle against all odds to make it through to their final curtain call, with hilarious consequences! Given five stars from the Daily Mail and called 'ridiculously funny' by Libby Purves. The Daily Telegraph sums it up as 'genuinely hilarious'. The Play That Goes Wrong is guaranteed to leave you aching with laughter!

**SCHEDULE:** Monday – Saturday. Dark Sunday.

**VENUE:** Duchess Theatre, Catherine Street, London, WC2. Nearest Tube: Covent Garden

#### PLAY



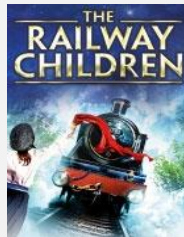
### THE RAILWAY CHILDREN

All aboard! This stunning adaptation of E Nesbit's classic novel features a stage built around a real train track, and a beautiful 60-tonne locomotive that steams into the theatre to delight all ages. A truly unique theatrical experience, The Railway Children returns to London after winning the Olivier Award for Best Entertainment and sell-out seasons in its previous home at Waterloo. You can find us amid the remarkable new developments on King's Boulevard. Don't miss your chance to join Bobbie, Peter and Phyllis on the adventure of a lifetime as they tell the story of how they became The Railway Children.

**SCHEDULE:** Tuesday – Sunday. Dark Monday.

**VENUE:** King's Cross Theatre, Goods Way, London, N1C Nearest Tube: King's Cross

#### PLAY



### THE RED LION

Passion. Loyalty. Salvation. Small-time semi-pro football, the non-league. A world away from the wealth and the television cameras. A young player touched with brilliance arrives from nowhere. An ambitious manager determines to make him his own. And the old soul of the club still has dreams of glory. A haunting and humorous new play about the dying romance of the great English game – and the tender, savage love that powers it. Patrick Marber returns to premiere a fifth play at the National Theatre, where his previous work includes Dealer's Choice and Closer. Contains very strong language.

**SCHEDULE:** Performances through 30 September. In repertory; please enquire or see online calendar.

**VENUE:** Dorfman Theatre, National Theatre, South Bank, London, SE1 Nearest Tube: Waterloo

#### PLAY



# WHAT'S ON

LONDON 2015-2016

## LEISURE CONNECT

### RICHARD II

#### PLAY

Ruling by divine right, but himself ruled by caprice, King Richard exiles Henry Bolingbroke and seizes his father's vast estates. While Richard is distracted by a rebellion in Ireland, Bolingbroke returns to England, intent on recovering his rightful property and, with the support of his disgruntled peers, perhaps seizing the crown itself. Dazzlingly eloquent and ceremonious, Richard II invests a weak and self-dramatising man with tragic status and represents Shakespeare's most searching exploration of the meaning of kingship and the rising powers that can destroy it.

**SCHEDULE:** Performances through 18 October. In repertory; please enquire or see online calendar.

**VENUE:** Shakespeare's Globe, New Globe Walk, London SE1 Nearest Tube: Blackfriars

**RICHARD II**

### ROMEO AND JULIET

#### PLAY

The first season of the Kenneth Branagh Theatre Company promises a year of unmissable theatre. Working in collaboration with artistic associates, director Rob Ashford and designer Christopher Oram, the acclaimed actor-director Kenneth Branagh presents an exceptional series of five plays that bring together a remarkable group of actors. Reuniting the stars of his celebrated film of Cinderella, Kenneth Branagh directs Richard Madden and Lily James as Romeo and Juliet and Derek Jacobi as Mercutio, in Shakespeare's heartbreaking tale of forbidden love.

**SCHEDULE:** Monday – Saturday. Dark Sunday. **2016 Performances 12 May to 13 August.**

**VENUE:** Garrick Theatre, Charing Cross Rd., London, WC2. Nearest Tube: Leicester Square



### SHOWSTOPPER! THE IMPROVISED MUSICAL

#### MUSICAL

Eighty new musicals will have their West End premiere this Autumn, each created on the spot by the incredible, multi award-winning musical comedians The Showstoppers. Audience suggestions are transformed instantly into all-singing, all-dancing shows with unpredictable and hilarious results. With a BBC Radio Four series and eight years of festivals and touring to their name, The Showstoppers have delighted audiences around the world with their ingenious, unique blend of comedy, musical theatre and spontaneity. Every Showstopper! performance is a hit musical waiting to happen!

**SCHEDULE:** Monday – Saturday. Dark Sunday. **Performances through 29 November.**

**VENUE:** Apollo Theatre, Shaftesbury Avenue, London W1D. Nearest Tube: Piccadilly Circus



### SINATRA - AT THE LONDON PALLADIUM

#### EVENT

Start spreading the news, ol' Blue Eyes is back! In his centenary year, Frank Sinatra will be returning to the London Palladium, 65 years after he made his UK debut on the same stage in 1950. Using rare or never before seen footage of the legend himself, a 24 piece orchestra and sensational live dancing Sinatra is an extraordinary new multi-media concert celebrating one of the world's greatest entertainers. Featuring all of Sinatra's greatest hits, including Come Fly With Me, Fly Me To The Moon, New York, New York and My Way. Experience the music of the most iconic voice of a generation; a man who always did it his way.

**SCHEDULE:** Monday – Saturday. Dark Sunday. **Performances through 10 October.**

**VENUE:** London Palladium, Argyll Street, London, W1F Nearest Tube: Oxford Circus



### STOMP

#### EVENT

Featured on the London 2012 Closing Ceremony and continuing its second sensational decade in London, STOMP is now FRESHER, FASTER and FUNNIER than ever before, with new routines, new choreography and new music. This multi-award winning show has a universal language of rhythm, theatre, comedy and dance. Eight performers use everything from Zippo lighters, plastic bags, bin lids and even the kitchen sink to hammer out an explosively feel good rhythm.

**SCHEDULE:** Thursday – Monday. Dark Tuesday and Wednesday.

**VENUE:** Ambassadors Theatre, West Street, London, WC2. Nearest Tube: Leicester Square



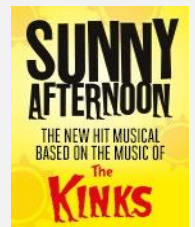
### SUNNY AFTERNOON

#### MUSICAL

The Kinks exploded onto the 60's music scene with a raw, energetic new sound that rocked a nation. But how did that happen, where exactly did they come from and what happened next? Set against the back-drop of a Britain caught mid-swing between the conservative 50s and riotous 60s, this production explores the euphoric highs and agonising lows of one of Britain's most iconic bands that influenced generations. This hugely enjoyable musical features many of the bands hits, including: You Really Got Me, Waterloo Sunset, Dedicated Follower of Fashion, All Day All of the Night, Lola, Sunny Afternoon and many more.

**SCHEDULE:** Monday – Saturday. Dark Sunday.

**VENUE:** Harold Pinter Theatre, Panton Street, London, SW1Y. Nearest Tube: Piccadilly Circus



### THREE DAYS IN THE COUNTRY

Russia. A beautiful country estate. The mid-nineteenth century. A handsome new tutor brings reckless, romantic desire to an eccentric household. Over three days one summer the young and the old will learn lessons in love: first love and forbidden love, maternal love and platonic love, ridiculous love and last love. The love left unsaid and the love which must out. Ivan Turgenev's passionate, moving comedy, *A Month in the Country*, has been a source of inspiration for films, a ballet and the plays of Chekhov. It's presented here in a new version by Patrick Marber, with a cast featuring John Simm and Mark Gatiss.

**SCHEDULE:** Performances through 21 October. In repertory; please enquire or see online calendar.

**VENUE:** Lyttelton Theatre, National Theatre, South Bank, London, SE1. Nearest Tube: Waterloo

**PLAY**



### THRILLER - LIVE

This spectacular concert celebrates the career of the world's greatest entertainer and undisputed King of Pop. Established in 2006, award-winning director Gary Lloyd brings to life the sensational dancing and distinctive sound of Michael Jackson and the Jackson 5. Thriller Live includes over two-hours of non-stop hit songs in a show that pays homage to the world-class spectacle of Jackson's legendary live performances. Expect your favourite songs delivered by an exceptionally talented cast and live band, including the smash hits: I Want You Back, ABC, Off The Wall, Smooth Criminal, Beat It, and Thriller, plus many more!

**SCHEDULE:** Tuesday – Sunday. Dark Monday.

**VENUE:** Lyric Theatre, Shaftesbury Avenue, London, W1. Nearest Tube: Piccadilly Circus

**MUSICAL**



### WAR HORSE

At the outbreak of World War One, Joey, young Albert's beloved horse, is sold to the Cavalry and shipped to France. He's soon caught up in enemy fire, and fate takes him on an extraordinary journey, serving on both sides before finding himself alone in no man's land. Albert, who remained on his parents' Devon farm, cannot forget Joey. Though still not old enough to enlist he embarks on a treacherous mission to find him and bring him home. A powerfully moving and imaginative drama filled with stirring music and songs, and astonishing life-sized puppets bringing breathing, galloping, charging horses to thrilling life on stage.

**SCHEDULE:** Monday – Saturday. Dark Sunday.

**VENUE:** New London Theatre, Drury Lane, London, WC2. Nearest Tube: Holborn or Covent Garden

**PLAY**



### WICKED

If you think you know the Wicked Witch of the West, think again... Wicked tells the incredible untold story of an unlikely but profound friendship between two girls who first meet as sorcery students at Shiz University: the blonde and very popular Glinda and a misunderstood green girl, Elphaba. Their extraordinary adventures in Oz ultimately see them fulfil their destinies as Glinda The Good and the Wicked Witch of the West. The spectacular, multi award-winning stage musical, with music & lyrics by Stephen Schwartz and a book by Winnie Holzman, has become the most spellbinding and successful new musical in years.

**SCHEDULE:** Monday – Saturday. Dark Sunday.

**VENUE:** Apollo Victoria Theatre, Wilton Road, London, SW1. Nearest Tube: Victoria

**MUSICAL**



### THE WOMAN IN BLACK

Since 1989, over 7 million people have lived to tell the tale of one of the most exciting, spooky, gripping and successful theatre events ever staged. Unanimously acclaimed by the critics, Stephen Mallatrat's adaptation of Susan Hill's bestselling novel combines the power and intensity of live theatre with a cinematic quality inspired by the world of film noir. It is a formula that provides audiences with an evening of unrelenting drama as they are transported into a terrifying and ghostly world.

**SCHEDULE:** Tuesday – Saturday. Dark Sunday.

**VENUE:** Fortune Theatre, Russell Street, London, WC2. Nearest Tube: Covent Garden

**PLAY**



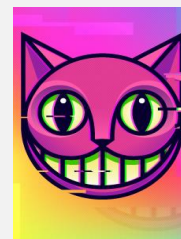
### WONDER.LAND

A new musical inspired by Lewis Carroll's iconic *Alice in Wonderland*, by Damon Albarn and Moira Buffini. Welcome to wonder.land, where you can be exactly who you want to be. Aly, 12, loves this extraordinary virtual world. Bullied at school and unhappy at home, wonder.land offers an escape. Online, Aly becomes Alice: brave, beautiful and in control. But some of the people she meets – the weird Dum and Dee, the creepy Cheshire Cat, the terrifying Red Queen – seem strangely familiar. And as hard as Aly tries to keep them apart, real life and wonder.land begin to collide in ever more curious and dangerous ways.

**SCHEDULE:** Performances from 17 November. In repertory; please enquire or see online calendar.

**VENUE:** Olivier Theatre, National Theatre, South Bank, London, SE1. Nearest Tube: Waterloo

**MUSICAL**





### LONDON CLASSICAL EVENTS

#### THE ROYAL OPERA Season 2015 - 2016

VENUE: Royal Opera House, Bow Street, London WC2E. Nearest Tube: Covent Garden

<b>Orphee et Eurydice</b>	14 September – 3 October
<b>Le Nozze de Figaro</b>	15 September – 14 October
<b>Ariadne auf Naxos</b>	10 October – 16 October
<b>Carmen</b>	19 October – 30 November
<b>Morgen Und Abend</b>	13 November – 28 November
<b>Cavalleria Rusticana/Pagliacci</b>	3 December – 1 January



#### THE ROYAL BALLET Season 2015 - 2016

VENUE: Royal Opera House, Bow Street, London WC2E. Nearest Tube: Covent Garden

<b>Romeo and Juliet</b>	19 September – 2 December
<b>Connectome/Raven Girl</b>	6 October – 24 October
<b>Viscera / Afternoon of a Faun / Tchaikovsky Pas de Deux / Carmen</b>	26 October – 12 November
<b>Monotones I and II / The Two Pigeons</b>	18 November – 5 December
<b>The Nutcracker</b>	8 December – 14 January



### ATTRACTIONS, SIGHTSEEING TOURS, AND OTHER UK ESSENTIALS

#### BIG BUS TOUR

Your open-top bus tour offers you a day to explore all of London's famous landmarks and reveals London's colourful 2,000-year history and the hop-on, hop-off facility will enable you to get on and off the bus at many places of interest. Your tour includes your choice of a recorded commentary or a live commentary delivered by entertaining guides, a free cruise on the river Thames and four guided walking tours for you to enjoy. The Big Bus Sightseeing Tour is a safe and relaxed way to experience this great city. The perfect introduction to London and a fun day out for all.

**SCHEDULE:** Available daily except Christmas Day.

**VENUE:** 48 Buckingham Palace Road, London SW1W. Nearest Tube: Victoria

#### SIGHTSEEING



#### BUCKINGHAM PALACE SUMMER OPENING

Buckingham Palace serves as both the office and London residence of Her Majesty The Queen, as well as the administrative headquarters of the Royal Household. It is one of the few working royal palaces remaining in the world today. During August and September when The Queen makes her annual visit to Scotland, the Palace's 19 state rooms are open to visitors for an unforgettable experience, including treasured paintings, sculpture, furniture, and porcelain. Please enquire about the State Rooms-Royal Mews Ticket, which includes entry to the Royal Mews at Buckingham Palace. Tickets sell out, book now!

**SCHEDULE:** State Rooms and State Rooms-Royal Mews Available 01 August to 27 September.

**VENUE:** Buckingham Palace, London, SW1A. Nearest Tube: Victoria

#### ATTRACTION



#### COCA-COLA LONDON EYE

Coca-Cola London Eye is the world's tallest cantilevered observation wheel, over 40 stories high, with miles of panoramic views on a clear day. The gradual flight in one of 32 high-tech glass capsules takes approximately 30 minutes and offers spectacular views of London and its famous landmarks such as Big Ben, Buckingham Palace and St Paul's Cathedral. The London Eye is the most distinctive addition this century to the world's greatest city, loved by Britons and tourists alike! Standard Flight and Fast-Track options are available.

**SCHEDULE:** Open daily except Christmas Day and some exceptions.

**VENUE:** Westminster Bridge Rd, London SE1. Nearest Tube: Waterloo or Westminster

#### ATTRACTION



#### HAMPTON COURT PALACE

Hampton Court has grown from humble beginnings in the 11th century to one of the finest palaces in the world. Over 800 years of history can be explored through this magnificent palace whose previous owners include Cardinal Wolsey, Henry VIII and Elizabeth I. Visitors are offered an introductory exhibition, a guide through Tudor kitchens, a costume guide tour, and the opportunity to see the Queen's state apartments, the King's apartments, the Wolsey and Georgian rooms, and the most impressive Great Hall, England's last and greatest medieval hall.

**SCHEDULE:** Open daily with some exceptions.

**VENUE:** Hampton Court Palace, East Molesey, Surrey, KT8. Nearest Rail: Hampton Court Palace

#### ATTRACTION



#### HARRY POTTER - WARNER BROS. STUDIO TOUR LONDON

People the world-over have been enchanted by the Harry Potter films for nearly a decade. And now, for the first time, the doors are going to be opened for everyone at the studio where it first began. You'll have the chance to go behind-the-scenes and see many things the camera never showed. From breathtakingly detailed sets to stunning costumes, props and animatronics, explore a unique showcase of the extraordinary British artistry, technology and talent that went into making the most successful film series of all time. **Tour includes return transportation.**

**SCHEDULE:** Available daily except Christmas Day and Boxing Day.

**DEPARTS:** Premium Tours, Victoria Coach Station, London, SW1V. Nearest Tube: Victoria

#### TOUR



#### JACK THE RIPPER COACH AND WALKING TOUR

Your tour begins with a coach drive direct to the dark side of London. See the Old Bailey, the Royal London Hospital where the Elephant Man lived, and where Braveheart was tortured, and hear tales of gangland warfare, butcherous barbers and great train robbers. In the East End, a hotbed of crime and vice in the 19th century, you'll leave the coach and walk his death trail inspecting the murder sites, deciphering the evidence and discussing his suspects. End the tour in the Sherlock Holmes Pub, which boasts a wide collection of the investigators memorabilia.

**SCHEDULE:** Duration 3 hours. Departures daily, except Tuesday and Thursday.

**VENUE:** Premium Tours, Victoria Coach Station, London, SW1V. Nearest Tube: Victoria

#### TOUR



### KENSINGTON PALACE

#### ATTRACTION

Enjoy a wide range of daytime and evening events at the newly renovated Palace, including exhibitions, special activities, tours, talks and live performances. Enjoy four redesigned visitor routes revealing both the secret and public lives of Kensington's inhabitants. Enjoy FASHION RULES, a glamorous new exhibition featuring rare and exquisite dresses from HM Queen Elizabeth II, Princess Margaret and Diana, Princess of Wales, and VICTORIA REVEALED, discovering stories from Queen Victoria's life told in her own words; the magnificent King's State Apartments; the world-renown Palace Gardens; and much more.

**SCHEDULE:** Open daily with some exceptions.

**VENUE:** Kensington Gardens, London, W8. Nearest Tube: High Street Kensington



### LEEDS CASTLE, CANTERBURY, DOVER & GREENWICH

#### TOUR

Enjoy a private tour of Leeds Castle, described as the "loveliest castle in the world", exploring the chapel, galleries, courtyards and banqueting hall. Then, see the famous white cliffs of Dover with a scenic drive along the old coastal road before stopping for lunch (not included). Then visit the ancient city of Canterbury and its Cathedral, the center of Christian worship for almost 1,700 years. Finally, end the tour with a visit through Greenwich, and enjoy an exclusive reception of tea/sparkling wine and muffins, as you gently cruise on the Thames back to central London.

**SCHEDULE:** Duration 9 hours. Departures daily except Thursday and Sunday. Hotel pick-up available.

**VENUE:** Premium Tours, Victoria Coach Station, London, Sw1V. Nearest Tube: Victoria



### MAGIC OF LONDON WITH CHAMPAGNE TEA

#### TOUR

Following a coach drive past London's most famous landmarks, arrive at the Tower of London and be met by Yeoman Warder for a private guided tour, including the Crown Jewels before it opens to the public. Then head to The Mall to watch the Changing of the Guard. Next, take a short cruise on the River Thames before a break for lunch. At St. Paul's Cathedral, listen to the 1695 organ that Mendelssohn played, and gain special entry to Whispering Gallery, not usually visited by groups. Ends with a full champagne afternoon tea at Park Plaza Westminster Hotel, with great views of Big Ben and the Houses of Parliament.

**SCHEDULE:** Duration 8 hours. Departures daily. Hotel pick-up available.

**VENUE:** Premium Tours, Victoria Coach Station, London, Sw1V. Nearest Tube: Victoria



### OXFORD, STRATFORD, WARWICK CASTLE & COTSWOLDS

#### TOUR

At Warwick Castle, the greatest medieval castle in Britain, enter over the footbridge and explore the castles ramparts, towers and gardens. In charming Stratford-Upon-Avon, you'll explore the birthplace of William Shakespeare. Lunch in a 15th century inn in the picturesque Cotswolds (food/drink not included). Oxford, the city of dreaming spires, boasts one of the worlds greatest - and oldest - universities. Enjoy a unique, all-access tour, before heading to the colleges spectacular dining hall, chosen as a key location in the Harry Potter films.

**SCHEDULE:** Duration 11 hours. Departures daily. Hotel pick-up available.

**VENUE:** Premium Tours, Victoria Coach Station, London, Sw1V. Nearest Tube: Victoria



### ROYAL LONDON MORNING TOUR

#### TOUR

Following a coach drive past London's most famous landmarks, including Big Ben, The Houses of Parliament, and along the Embankment, arrive at the Tower of London and be met by Yeoman Warder for a private tour, including being the first group of the day to see the Crown Jewels before it opens to the public. After free time, head to The Mall to watch the Changing of the Guard ceremony. Next, a short cruise on the River Thames ending near Big Ben, where you can depart, or join the group for a traditional pub lunch in Whitehall (food/drink not included).

**SCHEDULE:** Duration 4 hours. Departures daily. Hotel pick-up available.

**VENUE:** Premium Tours, Victoria Coach Station, London, Sw1V. Nearest Tube: Victoria



### ROYAL MORNING WINDSOR CASTLE TOUR

#### TOUR

At Windsor Castle, over 900 years of royal history are waiting for you. From William the Conqueror all the way through to our current Queen, successive monarchs have lived here and left their mark on what is now the largest continuously occupied castle in the world. Your ticket allows entrance to the castle, so you can see for yourself the splendour of St. Georges Chapel and the sumptuous state apartments. Then explore Windsor itself is a pretty town full of traditional shops and historic pubs.

**SCHEDULE:** Duration 5 hours. Departures Monday, Wednesday, Friday. Hotel pick-up available.

**VENUE:** Premium Tours, Victoria Coach Station, London, Sw1V. Nearest Tube: Victoria





# WHAT'S ON

LONDON 2015-2016

LEISURE  
CONNECT

## TOWER OF LONDON

In the early 1080s, William the Conqueror began to build a massive stone tower at the centre of his London fortress. Nothing like it had ever been seen before. Take a guided tour with one of the Yeoman Warders around one of the most famous fortified buildings in the world. Discover its 900 year history as a royal palace and fortress, prison and place of execution, mint, arsenal, menagerie and jewel house. Visit the Queen's Crown Jewels, the White Tower which today houses displays from the Royal Armouries' collection, the Medieval Palace's fabulous interiors used by medieval kings and queens, and so much more!

**SCHEDULE:** Open daily except 24-26 December and 1 January.

**VENUE:** Tower Hill, London EC3N. Nearest Tube: Tower Hill

## ATTRACTION



## TOTAL LONDON FULL-DAY TOUR WITH LONDON EYE

Following a coach drive past London's most famous landmarks, arrive at the Tower of London and be met by Yeoman Warder for a private guided tour, including the Crown Jewels before it opens to the public. Then head to The Mall to watch the Changing of the Guard. Next, take a short cruise on the River Thames before a break for lunch. At St. Paul's Cathedral, listen to the 1695 organ that Mendelssohn played, and gain special entry to Whispering Gallery, not usually visited by groups. End with a flight on the London Eye, one of the world's highest observation wheels, offering panoramic views from 40 stories in the air.

**SCHEDULE:** Duration 8 hours. Departures daily. Hotel pick-up available.

**VENUE:** Premium Tours, Victoria Coach Station, London, SW1V. Nearest Tube: Victoria

## TOUR



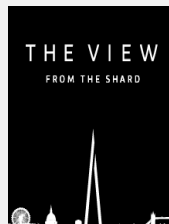
## THE VIEW FROM THE SHARD

London's newest and most eagerly awaited attraction is now open! The Shard is an iconic, landmark building on the London skyline, designed by Master Architect Renzo Piano. At a height of 1,016ft, the tallest building in Western Europe, The Shard redefines London's skyline and is a dynamic symbol of London, recognizable throughout the world. The View is situated at the top of The Shard, on floors 68, 69 and 72, and almost twice the height of any other viewing platform in London. 800ft into the skies above London, you'll experience an astonishing 360 degree, 40 mile view over the city and beyond unfurled beneath you.

**SCHEDULE:** Open Daily.

**VENUE:** The Shard, Joiner Street, London SE1. Nearest Tube: London Bridge

## ATTRACTION



## WINDSOR CASTLE, STONEHENGE AND BATH

Be amongst the first people to enter Windsor Castle, where 900 years of royal history are waiting to be discovered. See Runnymede where the Magna Carta was signed in 1215. Soak up the charming atmosphere of your traditional pub lunch, included in the price (through 31 March). Unlock the secrets of Stonehenge, the remarkable and mysterious feat of engineering and design. Then, enjoy the beautiful Georgian city of Bath, followed by time to shop and explore - why not head to the Jane Austen Centre or enjoy afternoon tea in the Pump Rooms while listening to a string quartet? (Roman Baths Entry included from 01 April.)

**SCHEDULE:** Duration 12 hours. Departures daily, with some exceptions. Hotel pick-up available.

**VENUE:** Premium Tours, Victoria Coach Station, London, SW1V. Nearest Tube: Victoria

## TOUR

